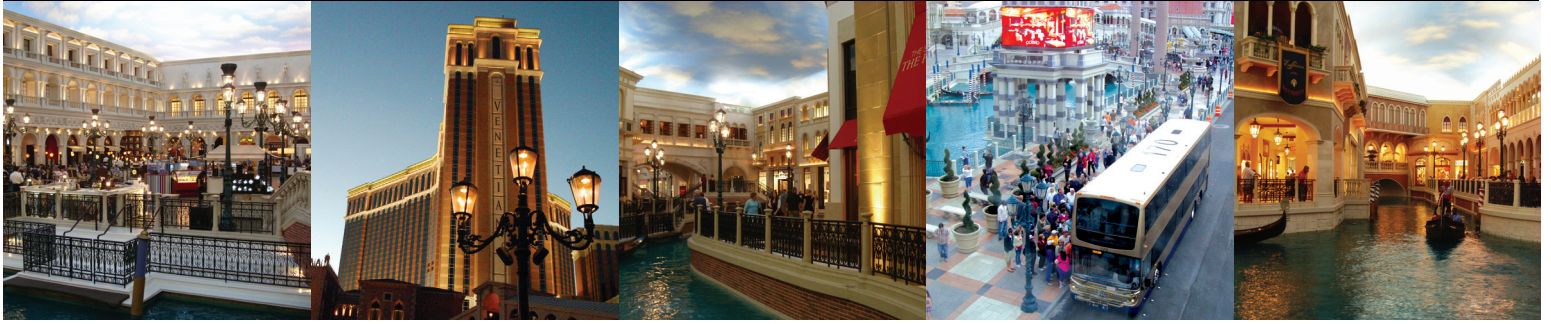




The Venetian Hotel, Casino, & Resort



Project Description

Experience the romance of Italy in the heart of the Las Vegas Strip. Beauty and grace surround you at The Venetian Resort Hotel Casino, where every detail has been carefully designed to provide you with a memorable stay – from the world's largest standard suites to the city's most elegant casino.

Martin & Martin has provided ongoing civil engineering and surveying services since 1994 for the demolition of the existing Sands Hotel/Casino and the redevelopment of the site as the Venetian Hotel-Casino Resort. Built through several phases, the project consisted of 6,000 luxury suites in three hotel towers, 200,000 sq. ft. of casino space, 500,000 sq. ft. of retail space, and two major parking garages with space for 7,500 cars. In addition, M&M aided in the construction of the new 1.6 million sq. ft. Sands Expo Center and the addition of 200,000 sq. ft. to the existing exposition center.

Civil engineering services included preparation of a traffic study, air quality analysis, hydrology study, surveying, and construction drawings for on-site and off-site improvements. Included in the improvements was a dual access road between the Venetian Hotel/Casino and Harrah's Hotel/Casino property providing access to both properties using the same road.

A Traffic Impact Analysis (TIA) was also prepared that modeled the effect of a major hotel-casino resort upon the surrounding road network. This TIA contained "Level of Service" calculations for 22 intersections and traffic signal progression analyses. Also performed were traffic demand management plans, porte-cochere analyses, and pedestrian analyses. A unique underground dock area was

designed using auto-turn movements that allowed large semi-trucks to enter and exit.

Owner

Las Vegas Sands Corporation

Location

3355 Las Vegas Boulevard
Las Vegas, NV 89135

Size of Project

40+ Acres

Estimated Project Construction Costs

\$1.5 billion

Services Performed

Technical Drainage Study (TDS), Detailed Grading Plans, Storm Drain, Sanitary Sewer, Watermain, Private Roadway Design, Public Roadway Design, Lift Station, Water Network Analysis, Sewer Collection System Analysis, Traffic Impact Analysis (TIA), Traffic Engineering, Signal Design, Construction Admin., Spec Writing, Construction Docs

